

Cultural and heritage organisations from across the county are commemorating the 100th anniversary of World War One with an outstanding four-year programme of events and activities under the banner **Worcestershire World War One Hundred**.

Led by the Worcestershire Archive and Archaeology Service, the programme, which received one of the largest Heritage Lottery Fund Grants outside of London, commemorates the role Worcestershire played in World War One and tells the stories of Worcestershire people, their involvement with and personal legacy from the War.

Residents of Worcestershire are invited to be part of the project through sharing their own family photos, diaries, letters and artefacts from World War One for inclusion in the People's Collection exhibition. If you would like to loan or gift materials for this special exhibition, contact us through our website.

You can see the full programme of what is happening near you, which venues are participating and how you can get involved at ww1worcestershire.co.uk

The map inside indicates just some of the highlights for 2018.



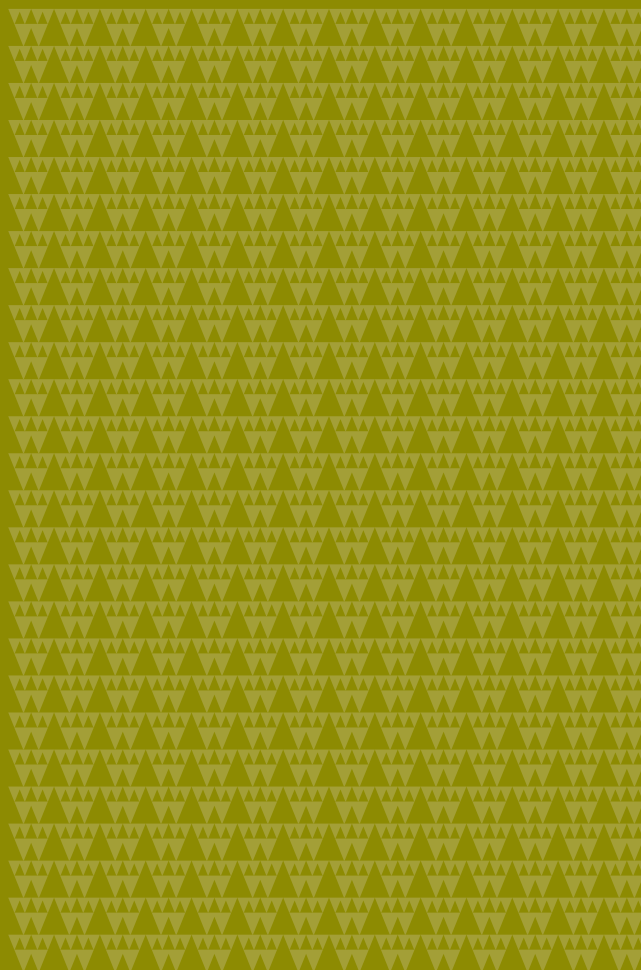
@WW1Worcs



World War One
Worcestershire

PARTNERS:

Worcestershire Archive and Archaeology Service
Museums Worcestershire
Avoncroft Museum of Historic Buildings
University of Worcester
George Marshall Medical Museum
Tudor House Museum, Worcester
Museum of Royal Worcester Porcelain
Elgar Birthplace Museum
Worcester Cathedral
Museum of the Mercian Regiment
Worcestershire Yeomanry Museum
Worcester City Council
Worcestershire Libraries and Learning Service



Worcestershire World War One Hundred

ww1worcestershire.co.uk/
ww1worcestershire.co.uk/enquiry/

Worcestershire Archive and Archaeology Service,
The Hive, Sawmill Walk,
The Butts, Worcester, WR1 3PD
Tel: 01905 845714



 @WW1Worcs

 World War One
Worcestershire



ww1worcestershire.co.uk

Event Guide
& Map 2018

YOUR COUNTY
NEEDS YOU



EVENTS 2018



1 EXHIBITION

Until November
A Happy Convalescence
 County Museum at Hartlebury,
 Hartlebury Castle, Hartlebury,
 Worcestershire, DY11 7XZ
 10am – 5pm Tue – Fri;
 11am – 5pm Sat, Sun
 Adults £5, Seniors £2.50,
 Children (aged 5–16) £2.50,
 Family Ticket £13 (admits
 2 adults & 2 children)

Discover the stories of fun, friendship and romance that offered a brief respite from the frontlines for injured soldiers sent to recover at Hartlebury Castle Hospital. Piece together the journeys of the ill and injured from the battlefield to 'Blighty' and back again. Meet the determined Worcestershire women who nursed them back to health.

2 TOURS

3 February – 11 November
The men's stories
 Worcester Cathedral, 8 College
 Yard, Worcester, WR1 2LA
 Tickets £5 from the Chapter
 Office on 01905 732900
 Worcester WWI tours of the
 Cathedral cloister memorial
 windows. Pre-booked guided
 tours telling the poignant stories
 of local soldiers.

3 ONLINE EXHIBITION

**Worcester & World War
 One Stories: Woodbine
 Willie & Worcester,
 The Worcestershire
 Soldier, Remembering
 Conflict Today**
 Worcester Cathedral, 8 College
 Yard, Worcester, WR1 2LA
Free
 Touch screen information at the
 Cathedral, available to visitors
 throughout the year.

4 TRAIL

Woodbine Willie Trail
 Pick up a trail from either
 The Hive or the Tourist
 Information Centre
Free
 Pick up a free trail and follow
 the story of Geoffrey Studdert
 Kennedy – Woodbine Willie –
 across Worcester.

5 TRAIL

Vesta Tilley
 Pick up a trail from either
 The Hive or the Tourist
 Information Centre
Free
 Pick up a free trail and follow
 the story of Vesta Tilley across
 Worcester.



6 EXHIBITION

3 February – 11 November
The War to End all Wars
 Worcester City Museum &
 Art Gallery, Foregate St,
 Worcester, WR1 1DT
Free
 From industry to the military,
 fashion to food, discover how
 the First World War changed the
 lives of Worcestershire people
 and shaped the future of the
 20th century.

7 EXHIBITION

5 February – 1 April
**Suffragettes, Voters and
 Worcester Woman**
 The Hive – upstairs Level 1,
 Sawmill Walk, The Butts,
 Worcester, WR1 3PD
Free
 An exhibition to mark the
 centenary of some women's
 enfranchisement in Britain on
 6 February 1918. It will introduce
 you to Worcestershire women
 who campaigned for the vote like
 Clemence Housman, Elsie Howie,
 Isabel Margesson and Florence
 Peek and begin to explore how
 women have used their vote in
 the years that followed.

9 TALK

20 March
**The People's Collection –
 Get Involved**
 Bromsgrove Library, Parkside,
 Market St, Bromsgrove, B61 8DA
12 – 3pm Free
 Come and find out more about
 The People's Collection and how
 you can be involved through
 sharing your families WWI stories.



Benjamin Williams Leader, Worcester Cathedral, 1897 © Worcester Museums Collection

8 EXHIBITION

17 February – 2 June
**Benjamin Williams
 Leader: Blest by the Suns
 of Home**
 Worcester City Museum & Art
 Gallery, Foregate St, Worcester,
 WR1 1DT
Free
 Through the work of Worcester's
 most famous artist, Benjamin
 Williams Leader, discover how
 the British landscape took on new
 emotional importance during
 World War One as a landscape
 worth fighting for.

**MORE
 EVENTS
 THIS
 WAY**

10 EXHIBITION

28 March – 30 September
WW1 and the Berkeley Family at Spetchley Park
Spetchley Park Gardens, Spetchley, Worcestershire, WR5 1RS. Tel: 01905 345106 enquiries@spetchleygardens.co.uk
Wednesday to Sunday from 11am to 6pm (last entry 5pm).

11 EXHIBITION

19 March – 30 June
“The Kaiserschlacht”:
The Worcestershire Regiment in the German Spring Offensive of 1918
Soldier Gallery, Worcester City Museum & Art Gallery, Foregate St, Worcester WR1 1DT

In early 1918 the Western Front had been locked in stalemate since the winter of 1914. All that was changed by the Kaiserschlacht, a series of major German attacks intended to destroy the British army and win the war in 1918 before the US became seriously engaged. The Worcesters were heavily engaged winning three VC's between March and May 1918. The exhibition explores the Worcesters role in this epic struggle.

12 EXHIBITION

May – November
The People's Collection
Bromsgrove Library, Malvern Hills Library, Redditch Library, Gallery 8 Pershore, Bewdley Museum, The Hive
For full venue details visit: www.www1worcestershire.co.uk/
12 – 3pm Free

The People's Collection is the culmination of the Worcestershire World War One Hundred programme and through exhibiting stories, artefacts and objects donated by people from across the County commemorates the role Worcestershire played in the First World War.

For details on talks and events at the different venues visit the website.

15 MILITARY PARADE AND CATHEDRAL SERVICE

Sunday 20 May
RAF 100 Anniversary Event
Worcester City Centre and Worcester Cathedral
Free

The parade will set off at 1pm from Cornmarket Car Park and progress to Worcester Cathedral for a service to celebrate the 100th anniversary of the founding of the Royal Air Force.



17 EXHIBITION

July – November
‘Back in Blighty’ Life on the Home Front 1914–1918
Avoncroft Museum, Stoke Heath, Bromsgrove, Worcestershire, B60 4JR
Tel: 01527 831363
10.30am – 5pm
Standard admission prices
Adult – £11
Senior – £9.90
Child (5+) – £6.60
Student – £6.60
Family ticket – £33
Under 5s – Free

An exhibition in the historic buildings around the Museum's 19 acre site which explores what everyday life was like in Britain during the War.

18 EVENT

Saturday 4 August
Worcestershire Remembers
The Guildhall, High Street, Worcester, WR1 2EY
11am – 4pm
Free

Learn more about the WW1 commemoration across the county and see exhibits from over 20 organisations.

19 EXHIBITION

1 – 30 September
Fields of Battle – Lands of Peace 14–18
Cathedral Square, Worcester
Daily
Free

A unique portrait of the First World War battlefields, Fields of Battle – Lands of Peace 14–18 is a powerful outdoor photographic exhibition, by Michael St Maur Sheil.

20 REMEMBRANCE SERVICE

Saturday 15 September
Drumhead Service
Gheluvelt Park, 69 Waterworks Road, Worcester, WR1 3EY
Times to be confirmed. Please check the **WWW100** website events page for up to date information.
12noon
Free

Join the Lord Lieutenant of Worcestershire for an outdoor service of remembrance.

21 FAMILY DAY

Saturday 15 & Sunday 16 September
The Bell Tent at Lickey Hills
Lickey Hills, Warren Lane, Rednal, Birmingham, B45 8ER
11am – 4pm
Free
Part of the Lickey Hills Historical Society weekend open day, visit the World War One Bell Tent and find out the impact World War One had on Worcestershire.

22 TALK

Wednesday 26 September
The Spanish Flu; story and science
The Chapel at The Infirmary, University of Worcester - City Campus, Castle Street, Worcester, WR1 3AS
7.30pm – 9pm
Free
A talk from Professor Maggie Andrews and Dr Mike Wheeler to investigate Spanish Flu. What was it? What does it look like? Why did it spread? What was its impact after the First World War?

23 EVENT

Friday 9 November
Remembrance at The Hive
The Hive, Sawmill Walk, The Butts, Worcester, WR1 3PD
Times: all day
Free
Commemorative activities throughout the day, please check the WWW100 website for up to date information.

24 LECTURES

Saturday 10 November
Remembrance Lectures
The Hive, Sawmill Walk, The Butts, Worcester, WR1 3PD
10am – 4pm
Free

Join us for themed World War One talks as part of our Remembrance Events and visit our Bell Tent in The Hive.

25 CONCERT

Saturday 10 November
The Worcestershire Symphony Orchestra (WSO), Worcester Cathedral and The Rivers Church of England Multi-Academy Trust
Worcester Cathedral, 8 College Yard, Worcester, WR1 2LA
For admission details and times, please check the Worcester Cathedral website: www.worcestercathedral.co.uk/Whats_On.php
A special project that will culminate in a performance of Laura Rossi's 'Voices of Remembrance' featuring the Worcester Cathedral Choir.

26 REMEMBRANCE SERVICE

Sunday 11 November
Armistice Remembrance Service
Worcester Cathedral, 8 College Yard, Worcester, WR1 2LA
6am – Lone Piper
10.30am – Service
10.45am – Cenotaph
Free

A day of remembrance at Worcester Cathedral.

6am – ‘The Battles Over: a Nation's tribute’ lone piper playing at the top of the Cathedral tower.

10.30am – Remembrance Sunday Service, followed by the wreath laying service at the war memorial.

12pm – 4pm half muffled peal of bells for the 100th anniversary of the end of the Great War.

27 REMEMBRANCE

Sunday 11 November
Wreath laying for “Woodbine Willie”
St John's Cemetery, MacIntyre Road, Worcester, WR2 5LH
3pm
Free
Wreath laying at the grave of Geoffrey Studdert Kennedy “Woodbine Willie”.

28 EVENT

Sunday 11 November
WWI Beacons of Light
Worcestershire Beacon, Malvern Hills, Fort Royal Park, Worcester & Bredon Hill, Evesham
7pm
Free
As part of Battle's Over more than 1,000 Beacons of Light will be lit throughout the United Kingdom, Channel Islands, Isle of Man and UK Overseas Territories as an act of commemoration.

29 FAMILY DAY

Sunday 11 November
Armistice Activities
Worcester City Museum & Art Gallery, Foregate St, Worcester
Times: Afternoon
Free
Live music, WWI letters and hands on craft activities. Suitable for families.

30 FAMILY DAY

Thursday 15 November
WWI Bell Tent
Ombersley First Endowed School, Ombersley, Droitwich, WR9 0DR
Times: Please see WWW100 website for up to date information
Free

Visit our World War One Hundred Bell Tent and meet re-enactors from Discover History to find out about the impact of WWI across Worcestershire.

31 FAMILY DAY

Saturday 17 November
WWI Bell Tent
Omberley Memorial Hall, Sandys Road, Ombersley, WR9 0DY
Please see WWW100 website for up to date information
Free
Visit our World War One Hundred Bell Tent and meet re-enactors from Discover History to find out about the impact of WWI across Worcestershire.

EVENTS MAP 2018



13 BIKE RIDES

1, 3, 5, 7, 9 May
Worcester War Memorial Bike Rides
Ride starts each date at 9.30am
Admission: Free

Developed by local man David Waite cyclists are invited to follow the commemorative route across Worcestershire visiting war memorials on their journey. Please check the WWW100 website for details of the routes.

14 CONCERT

Saturday 19 May
Royal Air Force Association Concert Band
Swan Theatre, The Moors, Worcester, WR1 3ED
Tel: 01905 611427 www.worcesterlive.co.uk
7.30pm
£15/£12 concessions

16 LECTURES FAMILY DAY

1 June – 8 July
The Unknown Warrior and the Cavell Van
Arley Station, Severn Valley Railway, Arley, Bewdley, DY12 3NF

For admission details please see the Severn Valley Railway website www.svr.co.uk

Themed lectures to take place, please see the WWW100 website events pages.

Visit the Edith Cavell Van, with exhibition, on the Severn Valley Railway throughout June.

